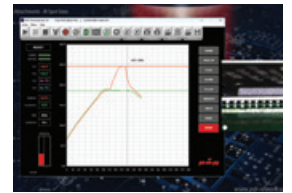
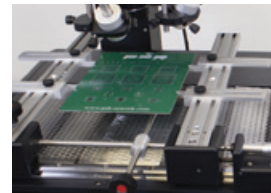
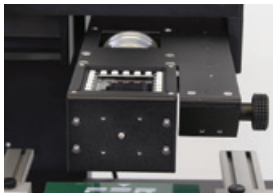




PDR IR-Q3

SEMI-AUTOMATIC ASSISTED REWORK

- Advanced Focused IR component heating
- Automatic Component Removal and Placement
- Quartz IR PCB preheating with 3 zones
- 2" Split Beam prism system for simultaneous PCB/component viewing
- Precision Components Pick and Placement up to 5um
- Precision PCB handling
- Component Nest/Flux Application Facility
- Closed Loop Non-Contact Temperature Sensing
- Advanced Automatic Thermal Process Control
- Reflow Process Observation Camera
- PCB Forced Air Cooling



▼ Technical Data

Bench Area:	1400mm (w) x 600mm (d)
Weight:	75kg
Warranty:	2 years
Voltage Frequency:	208-240 volts 50/60Hz, up to 3.5KW
Top Heater Power:	150W Focused Infrared up to Ø70mm Spot
PCB Preheater Power:	3250W Dark IR
PCB Preheater Heating Area Size:	14.1 x 9.4"/360 x 240mm
Number of PCB Preheater Zones:	3 Zones
Spot Size Included:	F700 (Ø 25-70mm), F200 (Ø10-28mm)
Component Placement:	2" Automatic Split Beam Prism Alignment
Placement Accuracy:	Up to 10um
Component Temperature Sensing:	Non-Contact IR Sensor
PCB Temperature Sensing:	Non-Contact IR Sensor
Max PCB Size:	12 x 18"/300 x 450mm
Max Component Size:	2.1 x 2.1"/55 x 55mm
Min Component Size:	2 x 2mm
Reworkable Area:	10 x 15.9"/254 x 406mm
Number of TC Channels:	4
Operating Software:	PDR's Thermoactive Software Suite suitable for Windows 10+
Certifications:	CE, UKCA, NFPA 79

▼ Accessories

PDR Lens Attachments	
AC-F400	F400 (Ø12 - 35mm spot size)
Spare Kits	
AC02009	Consumables kit (lamp+socket, gel flux, roll 25mm black tape, vac cup, springs, O rings)
AC02008	Consumables kit (lamp+socket, gel flux x 2, roll 25mm black tape, vac cup, springs, O rings, Lens No1, Cold Mirror)
Solderpaste Print Part System	
PDRPP01	Print Part System
PDRPP02	Print Part System Additional Stencil
PDR Reball Kit	
PDRRB01	PDR BGA Reball Set (BGA foil & frame, paste foil & frame, hi-temp esd nest, squeegee blade)
PDRRB02	PDR BGA Reball Additional Component Set
Other	
SP05029	Laser Alignment Tool
SC020	Controller & Sensor Calibration Check Kit
SP05017	PCB Sensor Contact Probe
SP06008	Additional Board Support Assembly