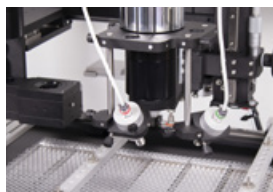




PDR IR-E6

BGA/SMT REWORK STATION FOR XL PCBs

- Gantry Mounted Advanced Focused IR component heating
- Large Quartz IR PCB preheating with 3 zones
- 24"/620mm PCB Capacity
- Split Beam prism system for simultaneous PCB/component viewing
- Precision Components Pick and Placement up to 10um
- Precision PCB handling
- Component Nest/Flux Application Facility
- Closed Loop Non-Contact Temperature Sensing
- Advanced Automatic Thermal Process Control
- Reflow Process Observation Camera
- PCB Forced Air Cooling



▼ Technical Data

| | |
|----------------------------------|---|
| Bench Area: | 2000mm (w) x 1000mm (d) |
| Weight: | 100kg |
| Warranty: | 2 years |
| Voltage Frequency: | 208-240 volts 50/60Hz, up to 4.2KW |
| Top Heater Power: | 150W Focused Infrared up to Ø70mm Spot |
| PCB Preheater Power: | 4000W Dark IR |
| PCB Preheater Heating Area Size: | 19.6 x 9.4"/500 x 240mm |
| Number of PCB Preheater Zones: | 3 Zones |
| Spot Size Included: | F700 (Ø 25-70mm), F200 (Ø10-28mm) |
| Component Placement: | Split Beam Prism Alignment/x50 Magnification |
| Placement Accuracy: | Up to 10um |
| Component Temperature Sensing: | Non-Contact IR Sensor |
| PCB Temperature Sensing: | Non-Contact IR Sensor |
| Max PCB Size: | 18 x 24"/460 x 620mm |
| Max Component Size: | 2.1 x 2.1"/55 x 55mm |
| Min Component Size: | 01005 |
| Reworkable Area: | 11.9" x 20"/304 x 508mm |
| Number of TC Channels: | 4 |
| Operating Software: | PDR's Thermoactive Software Suite suitable for Windows 10+ |
| Certifications: | CE, UKCA, NFPA 79 |

▼ Accessories

PDR Lens Attachments

| | |
|---------|-----------------------------|
| AC-F150 | F150 (Ø4 - 18mm spot size) |
| AC-F400 | F400 (Ø12 - 35mm spot size) |

PDR Micro Component Kit

| | |
|--------|---|
| UGMC01 | PDR Micro Component Kit (F150 lens attachment, low profile pickup head, SP03031:SP03030:SP03049 pick-up tips) |
|--------|---|

Spare Kits

| | |
|---------|---|
| AC02009 | Consumables kit (lamp+socket, gel flux, roll 25mm black tape, vac cup, springs, O rings) |
| AC02008 | Consumables kit (lamp+socket, gel flux x 2, roll 25mm black tape, vac cup, springs, O rings, Lens No1, Cold Mirror) |

Solderpaste Print Part System

| | |
|---------|--------------------------------------|
| PDRPP01 | Print Part System |
| PDRPP02 | Print Part System Additional Stencil |

PDR Reball Kit

| | |
|---------|---|
| PDRRB01 | PDR BGA Reball Set (BGA foil & frame, paste foil & frame, hi-temp esd nest, squeegee blade) |
| PDRRB02 | PDR BGA Reball Additional Component Set |

Other

| | |
|---------|---|
| SP05029 | Laser Alignment Tool |
| SC020 | Controller & Sensor Calibration Check Kit |
| SP05017 | PCB Sensor Contact Probe |