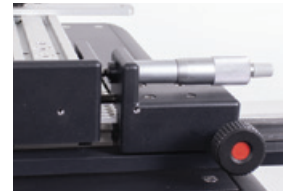
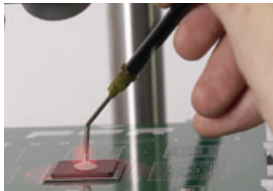




PDR IR-E1

ENTRY-LEVEL SMD/BGA REWORK STATION

- Advanced Focused IR component heating
- Quartz IR PCB preheating with up to 3 zones
- 18"/450mm PCB Capacity
- Precision PCB handling
- Non-Contact Component Temperature Sensing
- Wire TC PCB Temperature Sensing
- Handheld Pickup Tool
- Advanced Automatic Thermal Process Control



▼ Technical Data

Bench Area:	1400mm (w) x 600mm (d)
Weight:	65kg
Warranty:	2 years
Voltage Frequency:	208-240 volts 50/60Hz, up to 3.5KW
Top Heater Power:	150W Focused Infrared up to Ø70mm Spot
PCB Preheater Power:	3250W Dark IR
PCB Preheater Heating Area Size:	14.1 x 9.4"/360 x 240mm
Number of PCB Preheater Zones:	3 Zones
Spot Size Included:	F700 (Ø 25-70mm)
Placement Accuracy:	Up to 10um
Component Temperature Sensing:	Non-Contact IR Sensor
PCB Temperature Sensing:	Wire TC
Max PCB Size:	12 x 18"/300 x 450mm
Max Component Size:	2.1 x 2.1"/55 x 55mm
Min Component Size:	01005
Number of TC Channels:	4
Operating Software:	PDR's Thermoactive Software Suite suitable for Windows 10+

▼ Accessories

PDR Lens Attachments

AC-F150	F150 (Ø4 - 18mm spot size)
AC-F200	F200 (Ø10 - 28mm spot size)
AC-F150	F150 (Ø4 - 18mm spot size)

Spare Kits

AC02009	Consumables kit (lamp+socket, gel flux, roll 25mm black tape, vac cup, springs, O rings)
AC02008	Consumables kit (lamp+socket, gel flux x 2, roll 25mm black tape, vac cup, springs, O rings, Lens No1, Gold Mirror)

PDR Reball Kit

PDRRB01	PDR BGA Reball Set (BGA foil & frame, paste foil & frame, hi-temp esd nest, squeegee blade)
PDRRB02	PDR BGA Reball Additional Component Set

Other

SP05029	Laser Alignment Tool
SC020	Controller & Sensor Calibration Check Kit
SP05016	PCB IR Sensor - CS Type (Ø 7-10mm spotsize)
SP05017	PCB Sensor Contact Probe